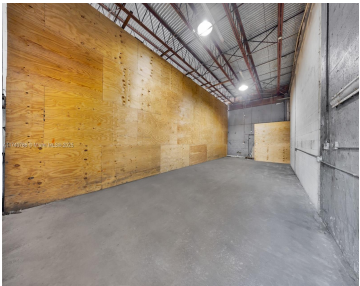
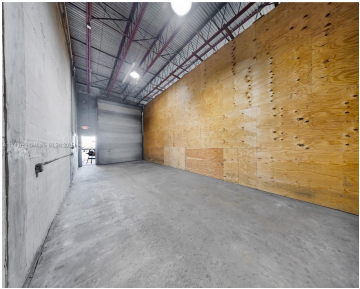
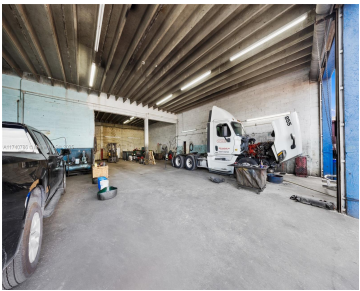
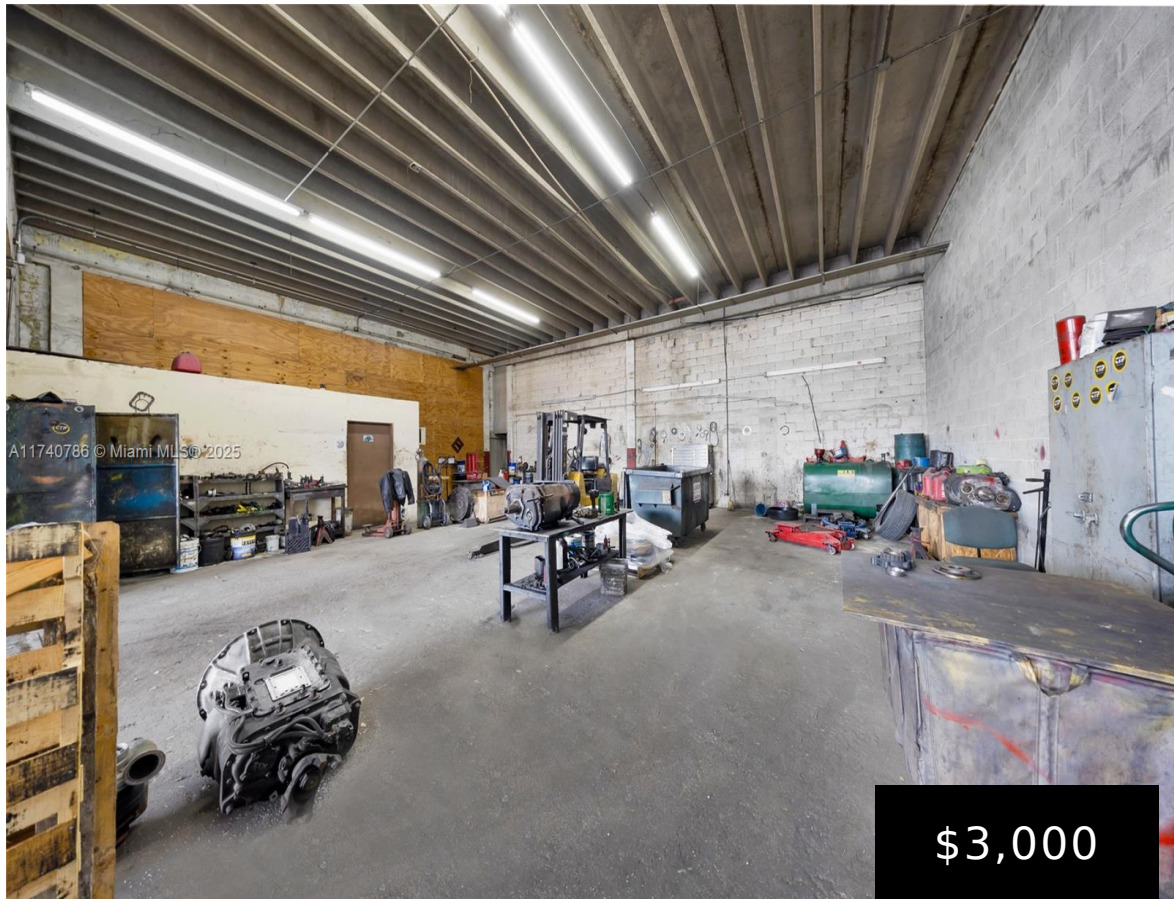


9630 SOUTH RIVER DR, MEDLEY, FL, 33166

<https://igorpresman.com>

9630 South River  
Dr, Medley, FL,  
33166



Located at 9630 NW South River Drive in the heart of Medley, FL, this prime industrial property offers unparalleled visibility and accessibility. Positioned directly on South River Drive with a clear view of Okeechobee Road, the property benefits from exposure to nearly 50,000 vehicles passing daily, making it an ideal location for businesses seeking high [...]

- Commercial Sale
- Industrial
- Active



## Building Details

NewConstructionYN: No

## Amenities & Features



**Waterfront available:** No

**AttachedGarageYN:** No

**PoolPrivateYN:** No

**GarageYN:** No

**CoolingYN:** No

**FireplaceYN:** No

