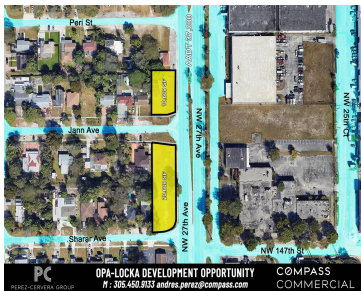


JANN AVE, OPA-LOCKA, FL, 33054

https://igorpresman.com

JANN AVE, Opa-  
Locka, FL, 33054



Compass Commercial presents a 10,259sf development site with direct frontage to NW 27th in Opa-locka. Great opportunity to develop into multi-family, retail or office. Situated in a zoning overlay boosting development potential to permit a mixed-use project up to (150) units per acre. Can be combined with folios to south providing 30,868sf of land.

- Commercial Land
- Active

## Building Details

NewConstructionYN: No

Building Name: PLAT NO 1 OPA LOCKA

## Amenities & Features



**Waterfront available:** No

**AttachedGarageYN:** No

**PoolPrivateYN:** No

**GarageYN:** No

**CoolingYN:** No

**FireplaceYN:** No

